

QST Mobile Application for Android

Welcome

This guide will familiarize you with the application, a powerful trading tool developed for your Android.



Table of Contents

1.....	What is this application?	4
2. Logging in.....		5
2.1. Login screen.....		5
2.2. Login options.....		6
3. Entering and viewing contracts.....		7
3.1. Pages.....		7
3.1.1. Add pages		8
3.1.2. Delete pages		9
3.1.3. Edit pages		9
4. Contracts		10
4.1. Enter contracts		10
4.2. Delete, edit and reorder contracts.....		10
5. About Quote Detail page.....		13
6. Contract Details		15
7. Symbol Search		16
8. Charts.....		18
8.1. Full Screen Charts		18
8.2. Browse Charts		22
9. Setting up Alarms		23
9.1. Add Alarm:.....		23
9.2. Delete Alarm:		24
9.3. Edit Alarm:.....		24
10. Order Entry		27
10.1. Order Entry Login options		27
11. Order Entry Account and Provider		29
12. Order Ticket.....		30
13. Account Information		33
14. Orders and Positions		34
14.1. Orders.....		35
14.2. Positions		35

14.3. Filters:	35
15. Price Ladder	37
16. Options Chain	38
17. General	41
17.1. Sending Logs	42
18. Help	43
19. Alert Settings	44
20. Saving Settings.....	45
21. Logging Out.....	46

1. What is this application?

The application is a revolutionary software offering world-class charting and analytics, real-time quotes and news. Highlights of the application include:

- Real-time streaming futures and options on futures quotes.
- Highly reliable and accurate data.
- Internet based mobility for anytime/anywhere access.
- Professional, advanced tools.
- The best combination of sophistication, usability, performance and price.

Current features include Quotes Monitor, Charts, News, Alarms, Orders and Positions, Options Chain, Price Ladder and Block Trades.

2. Logging in

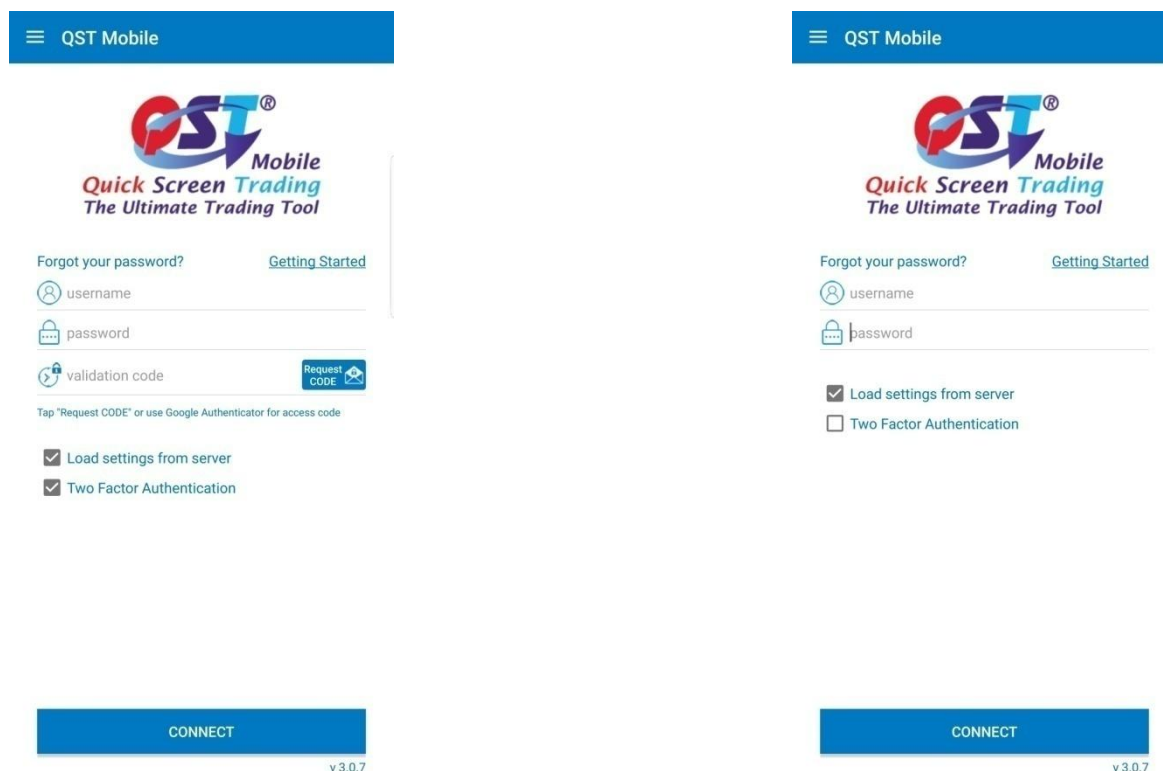
2.1. Login screen

When you start the application, a login screen will appear with fields to enter username and password.

Under the username and password fields, you have a checkbox, enabled by default, called **Load settings from server**.

If set to **On**, it will load the configurations you have saved on previous sessions, either on an android phone or other platforms with the application installed, from the *server*.

If it is switched **Off**, you will load your settings from your *device* locally.



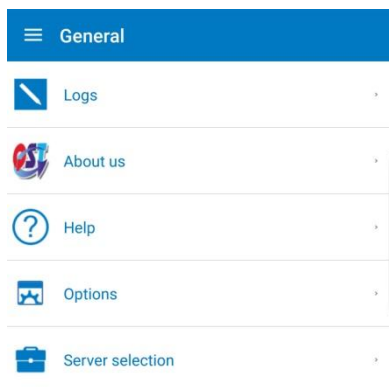
You can also enable/disable the **Two Factor Authentication** functionality before log in the application. The option is disabled by default. When enabled, you can **request a code** either by e-mail or use **Google Authenticator**. Note that if your user account is enabled for 2FA, you must use this secondary code **in order to** connect to the application.

In the upper left corner you have the **Forgot your password** link. You can follow this link to request an e-mail which will allow you to reset your current password.

In the upper right corner, you will find the **Getting Started** link. This will take you to the Help page, which explains how to login the application. You can also download a detailed documentation on the application itself and see a video tutorial.

2.2. Login options

While not logged in, you can still go to the **General** section by tapping the **General** icon from the tab bar menu. Here you can view your user **Logs**, some information about the application in the **About Us** section, the **Help** files, and configure your **Options** (if you want to read more about these, please go to the [About General tab](#) section).



3. Entering and viewing contracts

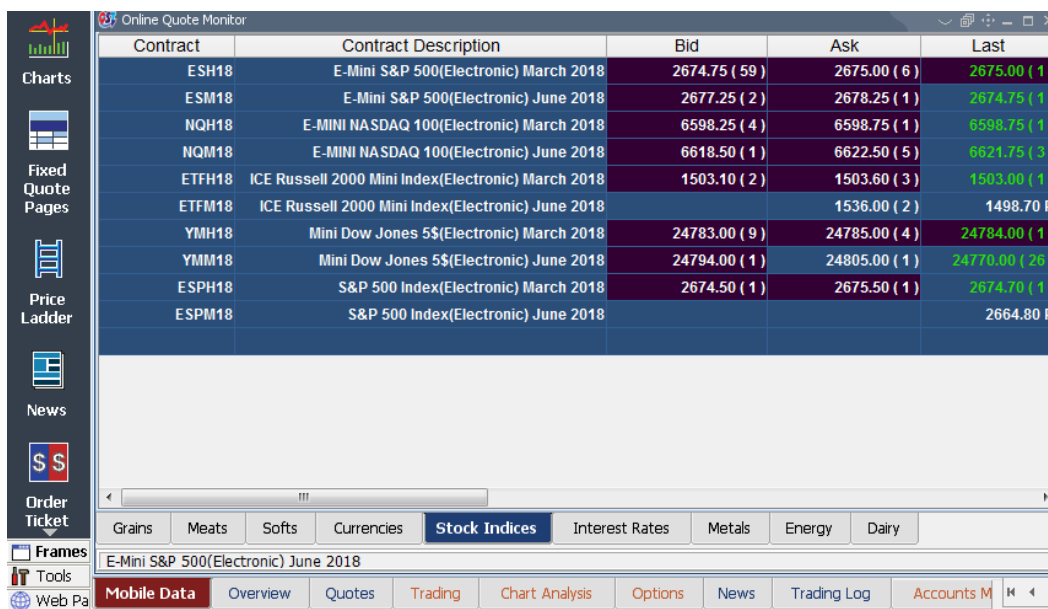
After you log in, you are automatically redirected to the **Quotes** section.

This is where you set up various quotes grouped on several pages and you can view information about contracts, open Charts, News, Options Chain, Price Ladder and set up alarms.

In this module, you can insert different kinds of contracts. You can also monitor exchange defined *strategies* like ESZ18:H19, *options* contracts and, of course, *futures* contracts.

NOTE:

If you do not have quotes programmed in your Quotes Monitor, we import the quotes and tabs from the Fixed Quote Page. You can also edit your contracts using the desktop edition under the Mobile Data section. Any changes made on Mobile Data will synchronize with the mobile version.



The screenshot displays the 'Online Quote Monitor' application. On the left is a vertical sidebar with icons for Charts, Fixed Quote Pages, Price Ladder, News, Order Ticket, and Frames. The main area contains a table with the following data:

Contract	Contract Description	Bid	Ask	Last
ESH18	E-Mini S&P 500(Electronic) March 2018	2674.75 (59)	2675.00 (6)	2675.00 (1)
ESM18	E-Mini S&P 500(Electronic) June 2018	2677.25 (2)	2678.25 (1)	2674.75 (1)
NQH18	E-MINI NASDAQ 100(Electronic) March 2018	6598.25 (4)	6598.75 (1)	6598.75 (1)
NQM18	E-MINI NASDAQ 100(Electronic) June 2018	6618.50 (1)	6622.50 (5)	6621.75 (3)
ETFH18	ICE Russell 2000 Mini Index(Electronic) March 2018	1503.10 (2)	1503.60 (3)	1503.00 (1)
ETFM18	ICE Russell 2000 Mini Index(Electronic) June 2018		1536.00 (2)	1498.70 P
YMH18	Mini Dow Jones 5\$(Electronic) March 2018	24783.00 (9)	24785.00 (4)	24784.00 (1)
YMM18	Mini Dow Jones 5\$(Electronic) June 2018	24794.00 (1)	24805.00 (1)	24770.00 (26)
ESPH18	S&P 500 Index(Electronic) March 2018	2674.50 (1)	2675.50 (1)	2674.70 (1)
ESPM18	S&P 500 Index(Electronic) June 2018			2664.80 P

Below the table is a horizontal menu with tabs: Grains, Meats, Softs, Currencies, **Stock Indices**, Interest Rates, Metals, Energy, Dairy. Below this is a sub-menu for 'E-Mini S&P 500(Electronic) June 2018' with tabs: **Mobile Data**, Overview, Quotes, Trading, Chart Analysis, Options, News, Trading Log, Accounts M.

3.1. Pages

The contracts you need to watch can be grouped in pages. You can add as many pages as you need. You can scroll to the next page by swipe from right to left, or to the previous page

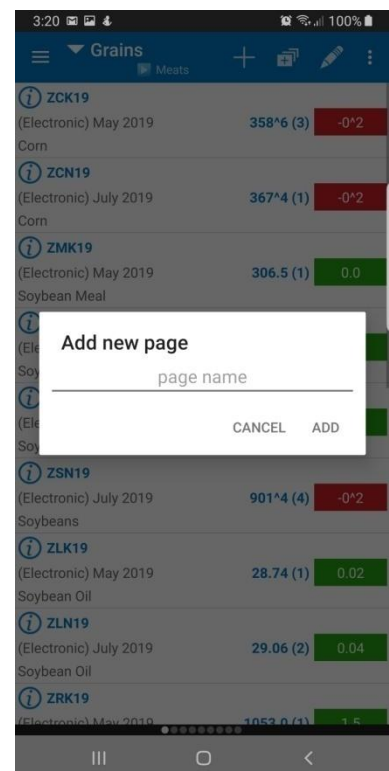
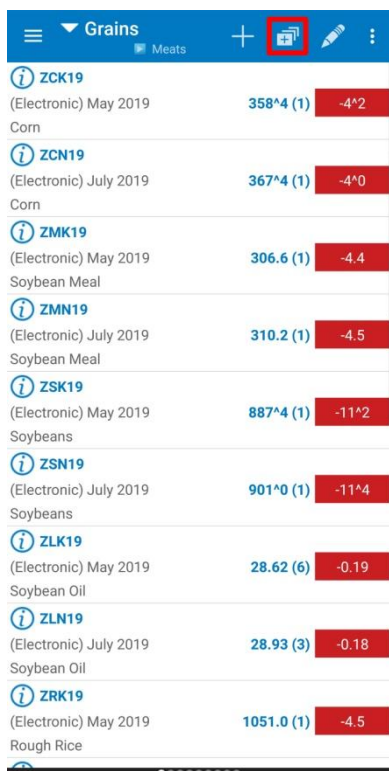
by swipe from left to the right. You can also tap the arrow button to the left of the page title to bring up a **list** of existing page. Tap on a page title in the list to switch to that page instantly.

While you have the page list open, you can press the **Edit** button on the right to enter edit mode. This will allow you to **delete**, **reorder** or **rename** your pages.

3.1.1. Add pages

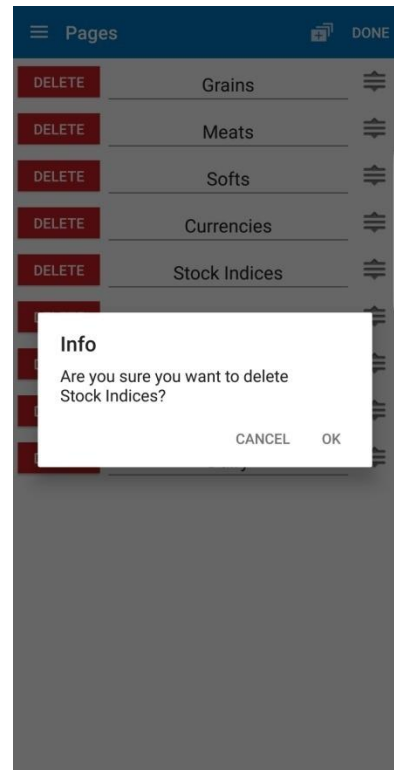
You can create a new page by pressing the **+** button from the upper left corner of the screen. After this, the **Add new page** dialog will appear. You can either use the keyboard to type the name of the new page, or you can copy and paste any text to the **page name** field. When you are ready, press the **Back** button from the lower left/right corner of the screen and the new page will be added to your **Pages** list.

The new page will be the last item of the list. If you want to know how to change the order of the pages, read the [Edit pages](#) section of this document.



3.1.2. Delete pages

In order to delete a page from **Quotes**, go to the abovementioned **Page List**, tap **Edit** and press the red circle on the left side of the page name. This will bring up a red **Delete** button to the right. Tap the button and delete the selected quote page. When you are ready, tap the **Back** button from the lower left/right side of the screen and you will be redirected to the Quote page you just modified.



3.1.3. Edit pages

Anytime you need to change something on your quote pages, go to the abovementioned **Page list**, then press the **Edit** button. In order to rename a quote page, change the name of the page in the text field. You can either use the keyboard to type the new name of the page, or you can copy and paste any text there.

If you need to change the order of your quote pages, press the icon from the right side of the name field and drag the page to the desired position.

When you made the modifications you need, tap the **Back** button and you will be redirected to the Quote page.

4. Contracts

On each page you can group several quotes and then you can follow the updates that happen to them.

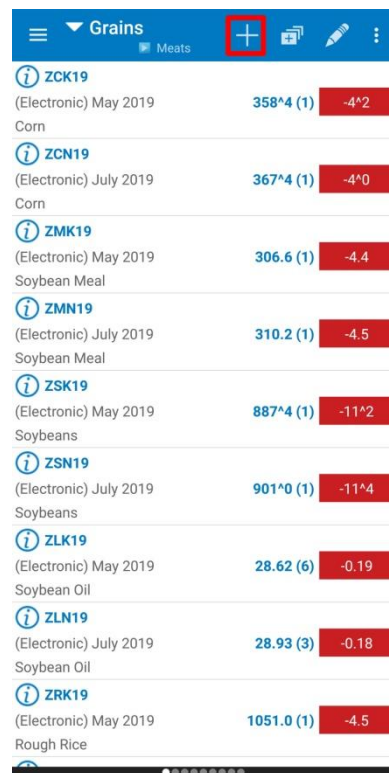
4.1. Enter contracts

In order to enter a new contract, press the **+** button on the upper right corner of the **Add new contract** screen. Enter the contract or formula you would like and then press the **Back** button. You can insert as many contracts as you like, or even leave empty rows if you want to.

The new row will be added to the bottom of the page. You can select the page to which you want to add the new contract, it doesn't need to page that is currently visible.

Additionally, you can add *title rows* in the **Add new contract** screen, if you press the **Activate as title row** toggle button before clicking on **Back**.

An important tool, what can be used when you add a new contract is the **Symbol Search**. This can be accessed in two ways: if you tap the magnifying glass icon below every contract field or the **Symbol Search** button from within the **Add new contract** dialog. You can read more about this tool if you go to the Symbol Search section of this document.



Grains			
Meats			
ZCK19	(Electronic) May 2019	358*4 (1)	-4*2
Corn			
ZCN19	(Electronic) July 2019	367*4 (1)	-4*0
Corn			
ZMK19	(Electronic) May 2019	306.6 (1)	-4.4
Soybean Meal			
ZMN19	(Electronic) July 2019	310.2 (1)	-4.5
Soybean Meal			
ZSK19	(Electronic) May 2019	887*4 (1)	-11*2
Soybeans			
ZSN19	(Electronic) July 2019	901*0 (1)	-11*4
Soybeans			
ZLK19	(Electronic) May 2019	28.62 (6)	-0.19
Soybean Oil			
ZLN19	(Electronic) July 2019	28.93 (3)	-0.18
Soybean Oil			
ZRK19	(Electronic) May 2019	1051.0 (1)	-4.5
Rough Rice			

4.2. Delete, edit and reorder contracts

When you are editing a quote page, you can delete contracts, edit and reorder them as well. This procedure starts like the entering contracts action: by pressing the blue **Edit icon** found on right of the page title

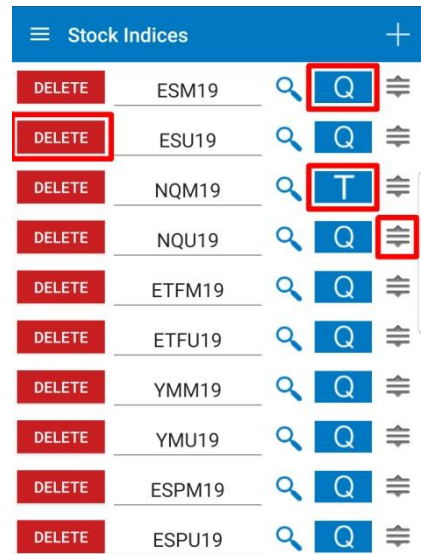
To delete a quote, press the red square on the left side of the row. This will bring up a red **Delete** button to the right. Tap the button to delete the selected entry.

In order to edit a row, tap the field containing your contract or text. You can either use the keyboard to manually delete and insert a new quote/text, or you can copy and paste text from one row to another. If you don't remember the symbol of the contract you want to insert to this field, tap the magnifying glass icon and use the **Symbol Search** tool (in order to read more about it, please read the Symbol Search section of this document).

You can also change the type of the row when you tap the **Q** or **T** button, depending on your needs:

Q for quote row

T for title row



Stock Indices				
DELETE	ESM19	🔍	Q	≡
DELETE	ESU19	🔍	Q	≡
DELETE	NQM19	🔍	T	≡
DELETE	NQU19	🔍	Q	≡
DELETE	ETFM19	🔍	Q	≡
DELETE	ETFU19	🔍	Q	≡
DELETE	YMM19	🔍	Q	≡
DELETE	YMU19	🔍	Q	≡
DELETE	ESPM19	🔍	Q	≡
DELETE	ESPU19	🔍	Q	≡

You can reorder the rows of the page, if you select a row by the icon on the right side and drag it to the desired place.

Once you are finished, press the **Back** button on the lower left/right corner of your screen.

You can return to this page at any time in order to make adjustments or enter new rows.

After you have entered your contracts, you can see some basic information about them on your current quote page. Next to the contract you will see the information for *Last trade* and *Net Change*. If you tap the *Net Change* box, you can toggle between displaying the *Net Change* or *Net Change%*.

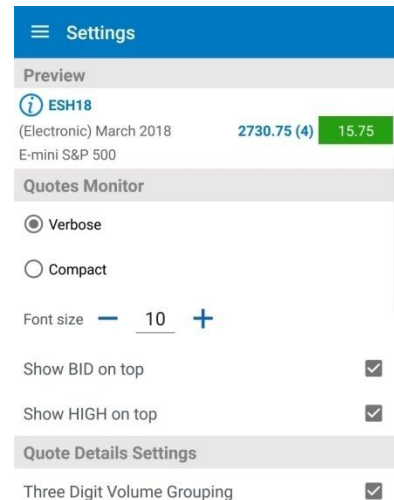
There are two designs available: **Verbose** and **Compact**.

In the **Verbose** design the font size can be changed for **Quotes** table. You will be able to change the font size by tapping the minus or plus buttons, in order to decrease or increase the font size. You can change how the Bid, Ask, High and Low values should be displayed.

If the chosen design is **Compact** there is the **“Bold”** option.

There is also the **Three Digit Volume Grouping** option, for Volume and Open Interest values. If this option is enabled, Volume and Open Interest values will be formatted with a comma (",") between every group of thousands.

On the left side of the contract name, you can see a blue circle with an *i* letter in the center of it. If you tap this icon, the **Contract Details** dialog will be opened. In order to read more about this, please go to the Contract Details section of this document.



While in *landscape* mode, the page will display more information about the contracts. You will see two columns next to the contract's *Net Change* box. The first column displays the *High* and *Low* of the contract, while the second column shows *Bid* and *Ask* information.

By pressing the **Bid - Sell** or **Ask - Buy** buttons, the **Order Ticket** dialog will appear and you will be able to place an order. If you need more information about this, please read the Order Ticket section of this document.

If you perform a long tap anywhere else on a quote row (tap and hold), you will open up a menu with several options. This will allow you to open up a Chart, Price Ladder, Options Chain, Alarms or an Order Ticket for the currently selected contract.

5. About Quote Detail page

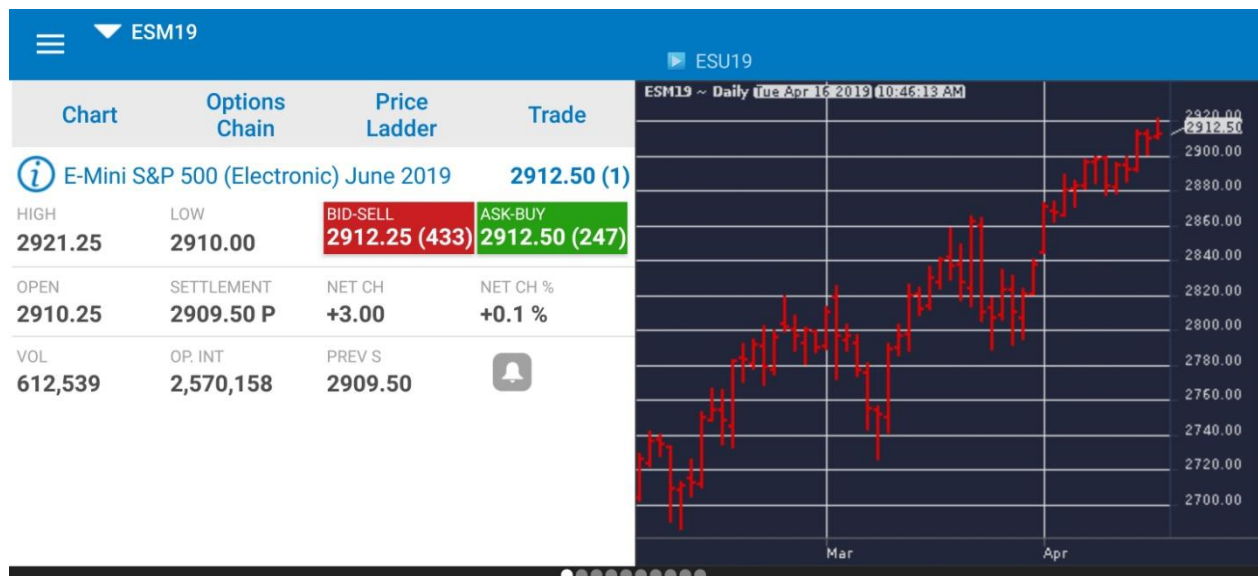
If you tap a row from the table, it will bring you to the **Quote Detail** page with some more details about the contract, such as *High, Low, Open, Close, Net Change, Net Change%, Volume, Open Interest* and *Previous Settlement*.

You can also find two buttons (**Buy - Sell** and **Ask - Buy**), which show the values of *Bid* and *Ask* and can be used to launch the **Order Ticket** dialog and place an order.

Below the detailed contract information you have an **Alarm** icon. This can be used to set alarms depending on your needs (see Setting up Alarms in this document for more details).

If you tap the blue circle with the *i* letter in the center of it, the **Contract Details** dialog will be opened. If you want to read more about this tool, please take a look at the Contract Details section of this document.

You can even see a miniaturized chart below the detailed contract information. You can double tap the chart to refresh it. You can launch a full-size chart on this page for your selected contract by tapping the **Chart** button on the upper left corner of the screen (see the Charts section for more details).



If you want to open the **Options Chain** module, tap the third button from the Quote Detail page (see Options Chain section for more details). After you are logged in to Order Entry, you can place orders from this module.

In order to launch the **Price Ladder** module of the application, click the **Price Ladder** button from the Quote Detail page (see Price Ladder section for more details). You can also place orders here, if you are logged in to Order Entry.

If you are logged in to Order Entry, you can also open the Order Ticket dialog and place an order in this page by tapping the **Trade** button (see Order Ticket section for more details).

If you want to quickly switch to a different contract in the Quotes Detail page, press the **blue arrow icon** to the left of the contract. This will bring up a menu similar to the page list, where you can tap a contract name to immediately switch to that contract.

6. Contract Details

In order to access the **Contract Details** tool, you should tap the blue circle icon with the *i* letter in the center of it. This is available in the Quotes, Quote Details. After you opened the **Contract Details** dialog, you will get information about the *Exchange, Contract value, Minimum tick, Minimum tick value, Daily hard limits, Open time, Close time, Expiration date, High* and *Low* of the selected contract as you can see in the fourth image below.

ESM19		
E-Mini S&P 500(Electronic) June 2019		
Exchange:	CME	
Contract Value:	\$145,612.50	
Minimum tick:	0.25	
Minimum tick value:	\$12.50	
Daily hard limits:	2706.50 -	
Open time:	5:00:00 PM CDT	
Close time:	4:00:00 PM CDT	
Expiration date:	06/21/2019	
Initial Margin:	\$6,600.00	
Period	High	Low
Lifetime	2961.25	2319.25
1 Year	2961.25	2319.25
6 Months	2921.25	2319.25
3 Months	2921.25	2601.25
1 Month	2921.25	2789.50
Session	2921.25	2910.00

7. Symbol Search

The **Symbol Search** tool is available from within the Quotes section of the application, when you add a new contract to the Quotes table or when you edit an existing one. You can also access it from Price Ladder, Alarms

The left screenshot shows the 'Search Symbol' dialog with the search text 's&p 500'. The dialog has a blue header with a menu icon, the title 'Search Symbol', and a 'DONE' button. Below the search bar, there are tabs for 'Futures', 'Equities', 'Contracts', 'Options', and 'Strategies'. The 'Contracts' tab is selected. Below the tabs, there is a table with columns 'Description', 'Months', and 'Years'. The table lists several S&P 500 contracts, including 'ES - E-Mini S&P 500(Electronic)', 'EG - E-mini S&P 500 Index AON(Electronic)', 'SDA - S&P 500 Annual Dividend Index(Electronic)', 'ESP - S&P 500 Index(Electronic)', 'S1A - S&P 500 Monday Week 1(Electronic)', 'S2A - S&P 500 Monday Week 2(Electronic)', 'S3A - S&P 500 Monday Week 3(Electronic)', 'S4A - S&P 500 Monday Week 4(Electronic)', 'S5A - S&P 500 Monday Week 5(Electronic)', and 'S1C - S&P 500 Wednesday Week 1(Electronic)'. At the bottom, there is a blue button labeled 'LOAD MORE RESULTS...'.
The right screenshot shows the same dialog, but with the 'Options' tab selected. Below the 'Options' tab, there are sub-tabs for 'Calls' and 'Puts'. The 'Calls' sub-tab is selected. Below the sub-tabs, there is a table with columns 'Strikes' and 'Chain'. The table lists several strikes for 'ESM19(A)C2910', including '2900', '2905', '2910', '2915', '2920', '2925', '2930', '2935', '2940', '2945', and '2950'. The '2910' strike is selected. At the bottom, there is a blue button labeled 'LOAD MORE RESULTS...'.

After the **Search Symbol** dialog is opened, please insert a search text in the **Enter search text** field and tap the **Search** button.

You can also define your search criteria, if you tap the buttons below the search text. You can switch between Futures and Equities, then Contract, Options or Strategies. In case of Options, you will be able to select between Puts and Calls. For Strategies, you can further refine your search by selecting **all** types, or just **Futures** or **Options**.

You will see the results of your search in the bottom of the screen as you can see in the first image below. Select one of the contracts from the **Description** tab and go to the second, **Months** tab. This will show you all the available months for the selected contract. The last step is to select the year for the contract from the third, **Year** tab. If you are looking to add Options, you can go to the **Chain** to select the type of the options (American, Weekly, Short-Dated and so on).

After you selected all the necessary information presented above, please tap the **Back** button from the lower left/right corner of the screen and you will be redirected to the **Edit** quotes section of the **Quotes** table.

8. Charts

In order to enter the **Charts** section, press the **Chart** button in the **Quote Detail** page or the long tap menu on the **Quote Page**.

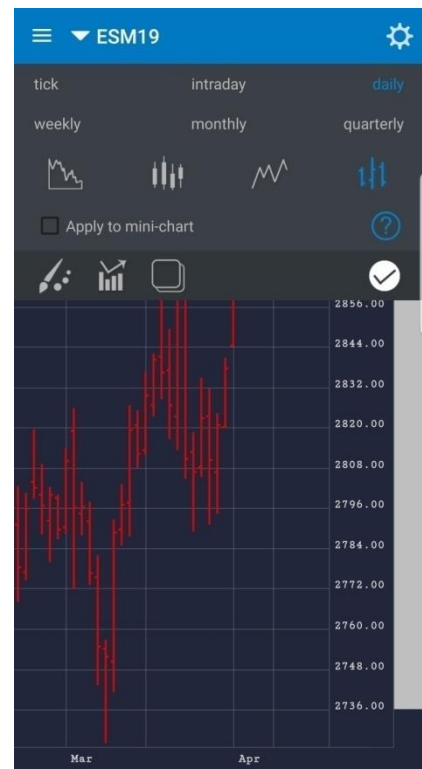
8.1. Full Screen Charts

When you enter the **Charts** section for the first time, you will see a full screen chart for your currently selected contract.

In full screen mode, you can see an icon with three dots on the lower left corner of your screen. Tap that, then the cogwheel icon to bring up a menu to configure your chart.

The buttons in the menu bar will let you configure the preferences for the charts. You can change the resolution of your chart, by selecting from the following list:

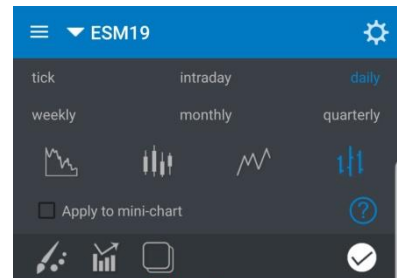
- tick
- intraday
- daily
- weekly
- monthly
- quarterly



If you selected *tick* or *intraday*, you will be also asked to select the interval for that resolution, before the chart will be refreshed.

The second section of the menu contains the **Chart Type** select, which lets you change the graphics of the chart to one of the following:

- **area**
- **candles**
- **line**
- **bars**



The final section of the chart menu bar has the following 3 buttons (4 if you are in landscape view):

- **Chart Themes**
- **Indicators**
- **(Browse)**
- **Done**

After you are done with your configuration, tap the **Done** icon to go back to the chart. You can toggle the **Apply to mini-chart** option to apply all your settings to the mini-chart from the **Quote Detail** page.

In the **Chart Themes** screen, you can select from a list of color themes to apply on different elements of the chart. Aside from the Default setting, you have a selection of pre-defined themes, or you can select the **Custom** to customize the colors for your chart. Once you have selected your desired theme, tap **Apply To Chart** to activate your setting and return to the chart.

The **Indicators** button opens the indicator settings. When you first open this screen, you will be taken to a list of

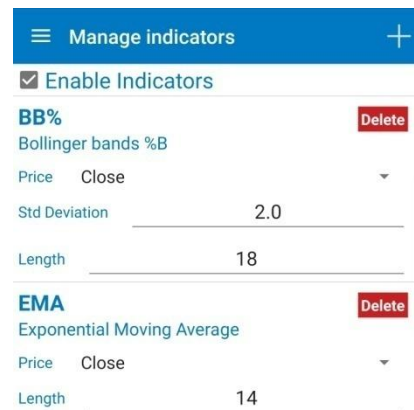


available indicators. You can scroll down the list or use the **Search** feature to look for a specific indicator. By tapping one of them, you will add them to your active indicator list.

On the **Indicators** screen, you can press the **+** button on the upper right corner of the screen to add other indicators.

You can remove indicators from the active list by tapping the red circle, then tapping the red **Delete** button. You can also edit the parameters of an indicator on this page.

On the upper half of the screen there is an **Enable Indicators** toggle button. This must be switched **On** to display the indicators.



Press **Back** on the upper left corner of your screen when you are finished. The indicators in the list are applied on every chart. The **Back** button hides the menu bar, so you can see the entire chart again.

Double-tap a chart enables the crosshair cursor and the tooltip, giving you information about the *High, Last, Low, First* and *Date* of that exact point. Drag your finger on your chart to get info on a certain point on your chart. The tooltip will update accordingly. Double tap to hide the cursor and enable zooming functions.

You can zoom in and out on a chart in the same way as any other pictures on the iPhone/iPad. You can also scroll horizontally and vertically to get to specific point on the chart, even while zoomed in.



On the very right of the chart, you will find the **Order Entry** bar. You can tap anywhere on the bar to place a Buy or Sell order at the price right next to the bar. You will first be prompted to select Buy LMT or Sell STOP, after which you will be taken to the **Order Ticket** screen, where you can further customize your order before placing it. **Active orders** for your current contract (regardless of where they were placed from) will appear as icons on the Order Entry bar with the following color scheme:

Blue icon for **Buy** orders

Red icon for **Sell** orders

Yellow icon if the chart is zoomed in to a point where two or more orders get close enough to each to overlap (also known as order clusters).

You can tap an order's icon to bring up the menu from there you may perform a **Cancel**, **Cancel/Replace** or **Cancel/Replace at MKT** on the order. To Cancel/Replace an order you can also drag the icon along the order entry bar at stop it at the price that you would like to place it at. A confirmation dialog will appear, allowing you to choose exactly which order you would like

to perform the action on. This is especially useful if you have multiple orders near the selected positions or even overlapped icons. Tap the **info** icon next to an order to go to the Order Ticket.

You can switch to a new contract by using the same dropdown list as seen on the Page or Quote Details screen. In order to exit **Charts** and go to another module, press the **X** button on the bottom left corner of your screen.

8.2. Browse Charts

You can browse through charts while in landscape view. To enter browse mode, press the **Browse** button on a full screen chart. This button can be accessed if you tap the arrow icon on a full screen chart.

In browse mode you can scroll between mini-charts for all the contracts you have entered in different pages in the **Quotes** section. In order to move from one page to another tap and scroll left or right on the screen. Double tap a mini-chart to enter that selected chart into full screen mode. Alternatively, you can also rotate the device back to portrait view, which will automatically bring that chart back to full screen.

If you don't want to go back to the full screen charts, you can return to the **Quote Detail** page by tapping the **Quote Detail** button at the bottom left corner of the screen.

9. Setting up Alarms



While in the **Quote Detail** section, you should see the grey alarm icon next to the mini-chart. Tapping it will allow you to enter and configure alarms for the currently selected contract. You can also open the Alarm menu by long tapping a contract in the **Quote Page**.

Alarms will display messages when the last trade value for the contract reaches a certain condition, accompanied optionally by sound and vibration, depending on your selection.

While on the **Alarms** page, you can scroll in a list of alarms, or use the **Search** function to find the one you need.

9.1. Add Alarm:

☰ Add Alarm DONE

Message: _____

Contract: NQU19 🔍 ☒ Enable

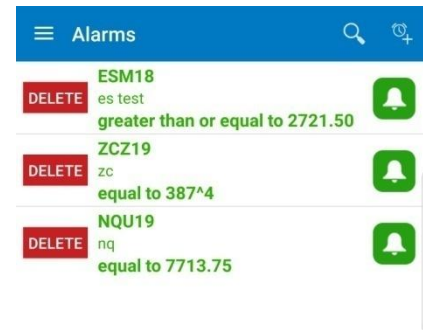
Trigger when last trade is:

- ☒ equal to
- ☐ greater than
- ☐ less than
- ☐ greater than or equal to
- ☐ less than or equal to

Price: — 7713.75 +

9.2. Delete Alarm:

In order to delete an existing alarm, tap the red circle on the left side of the selected alarm and then press the **Delete** button that appears for confirmation.



9.3. Edit Alarm:

Tapping an alarm will allow you to edit the parameters for the respective alarm in the **Edit Alarm** dialog. After you finished changing options (which are presented in the [Options, states and colors of Alarms](#) section), tap the **Back** button and you will get back to the **Alarms** list.

Options, states and colors of Alarms

While creating a new alarm or editing it, you can configure the following options:

- **Message** - You can enter a text message that will appear when an alarm is triggered. This is optional.
- **Contract** - By default the selected contract will be entered in the contract field. You can edit it and add alarm for a different contract. You can also use the **SymbolSearch** tool in order to change the contract you are using by tapping the magnifying glass icon next to the **Contract** field. If you want to read more about this tool, please go to the [Symbol Search](#) section of this document.

- **Enable** - Using this option, you can toggle the alarm **On/Off**. If you disable the alarm, it will still appear in the list, but it will not be triggered even if the condition is met.
- **Trigger when last trade is:** - This will determine the relation between the last trade of the contract and the price value you will enter. The last trade can be:
 - **equal to** - the value you enter
 - **greater than** - the value you enter
 - **less than** - the value you enter
 - **greater than or equal to** - the value you enter
 - **less than or equal to** - the value you enter
- **Price** - The value you are comparing the last trade to.

You can also set the **Vibration** or **Sound** for triggered alarms or **enable/disable** the popup window for Alarms. For more information about this check Alerts section of this document.

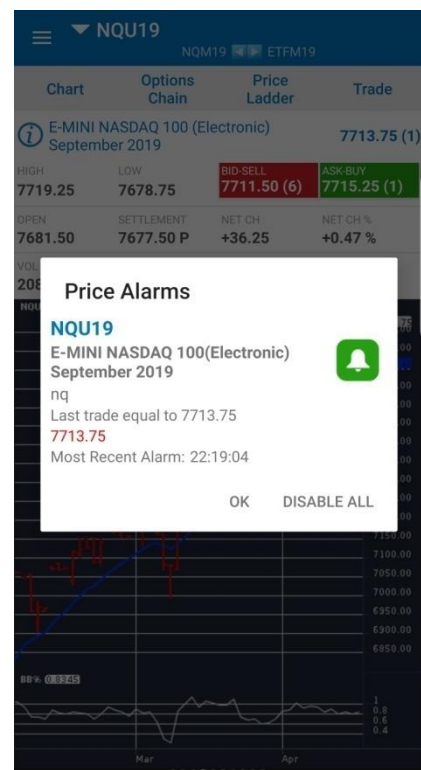
In the **Alarms** list, you will see that depending on the options you just set, you will have alarms written with red or green text. Active alarms (enabled alarms) will have their text written in green and the disabled alarms will appear in red.



No alarms defined for the current contract



Alarm enabled





Alarm disabled

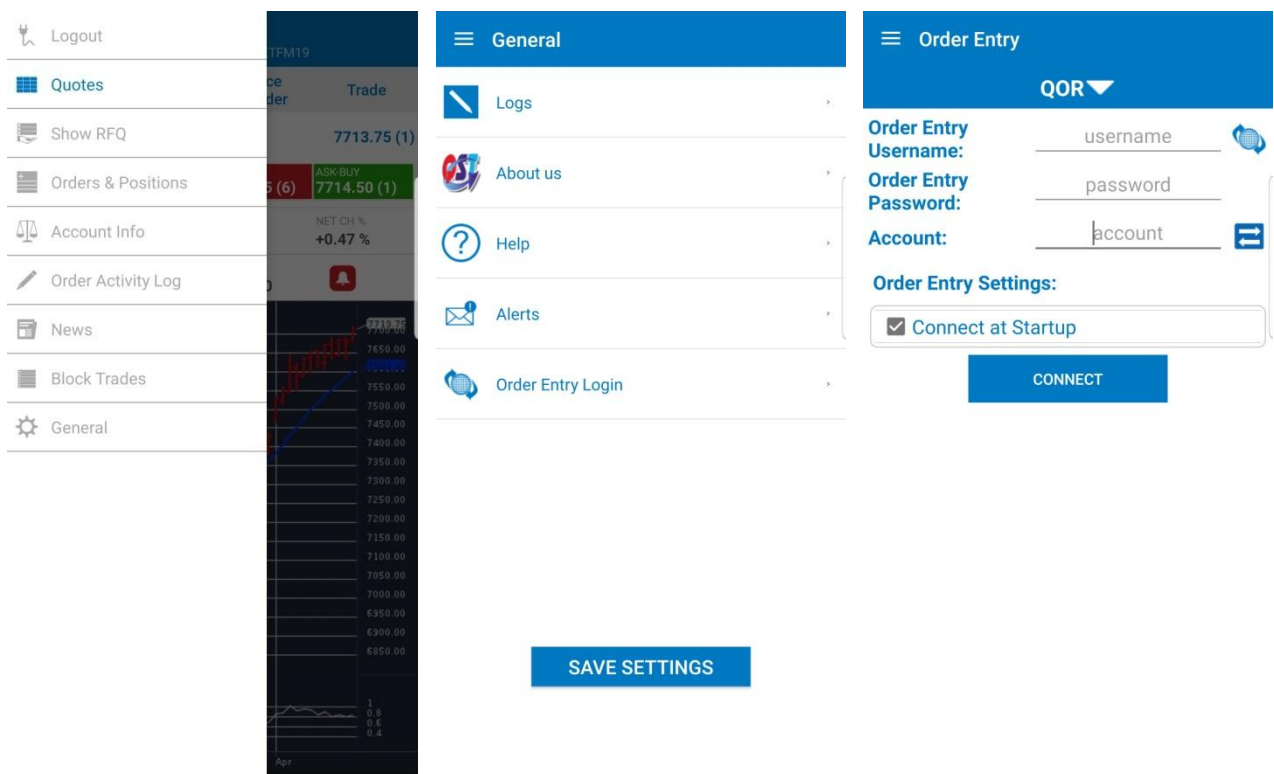
Once you have created the alarms you want, tap the **Back** button in the upper left corner to return to the **Quote Detail** page. The alarm icon will turn green, indicating that there is an alarm enabled for the contract.

When an alarm is triggered, a popup window will appear and you will have an option to **Disable All** alarms.

10. Order Entry

10.1. Order Entry Login options

To access the order entry related features of the application, you must first log in to your Order Entry account. You can do that by going **General** and then tap **Order Entry Login**. Based on the chosen menu design you can access the **General** section either from the **vertical menu** or from the **tab bar menu**. In order to open **the vertical menu** just tap the icon on the lower left side of the screen. It is important to mention, that you can find this item under the **General** if you are logged in to the application.



You will also be prompted to log in and brought to the Order Entry login screen if you try to access **Orders & Positions**, **Account Information**, **Price Ladder**, **Options Chain**, **Order Activity Log** or the **Trade** function from **Quote Details** while logged out. Fill in the required fields (may vary depending on your Order Entry provider) then tap **Connect**.

If you selected the **PTS** option, you will be able to **Connect** or **Disconnect** from the Paper Trading server. Paper Trading is a simulated trading process in which would-be investors can practice investing without committing real money.

There are also 4 toggle buttons you can use to customize your **Order Entry Settings**.

The **Demo** option can be used in order to connect a demo (option enabled) or a live (option disabled) Order Entry Account.

The **Remember my Password** setting allows the application to remember the password for your Order Entry account. All the other pieces of information related to your Order Entry account are automatically saved in their respective fields, no matter what your settings are.

The **Connect at Startup** setting can enable the automatic login to your Order Entry account right after you log in to the application, so that you don't need to go to the Order Entry login screen again.

Finally, **Don't Ask me Again** setting can disable/enable the server messages you get at the application login which prompt you to log in to your Order Entry account.

11. Order Entry Account and Provider

Next to the **Account** field, you can see the **Switch Order Entry Account** icon.

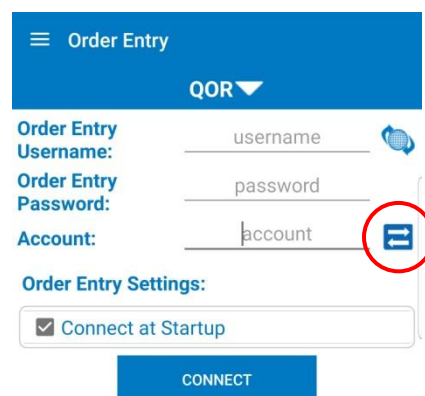
This button brings up a list with all the Order Entry accounts you used before. Tap an Order Entry account in order to use an account from the abovementioned list or press **Cancel** if you want to go back to the previous screen. Keep in mind that an account has to be typed in manually at least once before it shows up in the list.

You can also switch between your Order Entry accounts, if you tap the dedicated blue button from [Order Ticket](#), [Account Information](#), [Orders and Positions](#), [Price Ladder](#) and [Options Chain](#).

This functionality is not available for Paper Trading, just for live trading.

If you need to switch your **Order Entry Provider**, press the **blue arrow** to the left of the provider name. Select the provider you would like to use (or **PTS** for **Paper Trading**), then press **Back**. Each provider will remember its own set of credentials and toggles for the settings mentioned above.

In case you have more than one connection for an **Order Entry Provider**, you can press the **globe icon** found on the right side of the **Order Entry Username** field. This will bring up a list of previously used order entry connections (for your currently selected provider only). As with the **Accounts**, you need to have the connection details entered manually at least once before it will show up in the list.



The screenshot shows the 'Order Entry' screen with a blue header. Below the header, there's a dropdown menu labeled 'QOR'. The main section contains three input fields: 'Order Entry Username:' with a globe icon on the right, 'Order Entry Password:', and 'Account:'. A blue double-headed arrow icon is circled in red next to the 'Account' field. Below these fields is the 'Order Entry Settings:' section with a checkbox for 'Connect at Startup' and a 'CONNECT' button at the bottom.

12. Order Ticket

The **Order Ticket** is the main Order Entry module where you can place your Buy or Sell order on a contract. In order to open up an **Order Ticket**, first go to the **Quote Detail** page and then press the **Trade** button.

An **Order Ticket** will also be opened when you cancel/replace an order from **Orders and Positions** and you can also access it from **Options Chain** or **Price Ladder** modules.

Select the **Side** of the order by tapping the **Buy** or **Sell** button in the middle of the screen.

Below those buttons you should find the **Quantity** field. You can enter the quantity of the order manually or tap the arrow buttons on the sides to adjust the value.

The **Contract** field is automatically filled with the currently selected contract, but you can change it by tapping the text field. Below this field you should see a magnifying glass icon, which opens the **Symbol Search** tool. In order to read more about this, please take a look at the [Symbol Search](#) section of this document.

Except for the **MKT** orders, you can also fill in the **Price** of the order. For **STWL** orders you will see a field for the **Limit** price.

In the center of the screen, there is a picker from where you can select the order type:

- **MKT**
- **LMT**
- **STOP**

Order Ticket

Account: Last Tick 2912.75

Side Contract ESM19

BUY SELL

Quantity Price

1 2913.00

LIMIT Day

Buy 1 ESM19 @ 2913.00 LIMIT

PLACE ORDER

- **STL**
- **STWL**

After you selected the order type, tap the **Lifetime** button to the right and the order type scroll list will change, allowing you to select the **Lifetime** of the order from the following list: **Day**, **GTC** and **GTD**.

After you found the option you need, tap **Done** to save your selection.

If you selected **GTD**, you should see a button for the **Date**, tap it and select the month, day and year of the order. Tap **Back** when finished.

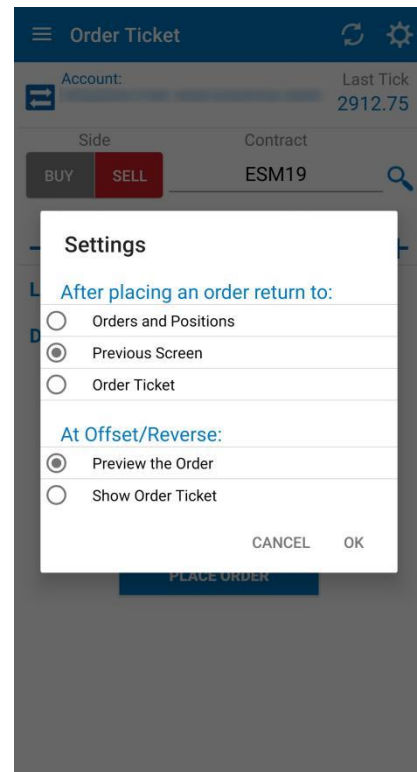
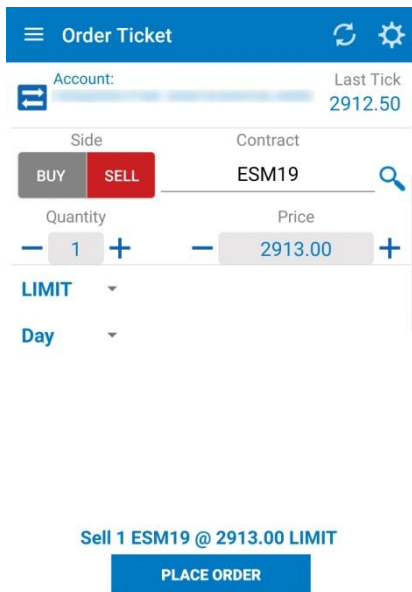
In the upper right corner of the ticket, you can tap the settings button (represented by cogwheels). This will bring up a new screen where you have three options for where to go after placing an order:

- **Orders and Positions**
- the **Previous Screen**
- or stay at the **Order Ticket** screen

and two options that can be used at **Offset** or **Reverse**:

- **Preview the order** - opens a preview dialog before placing the order;
- **Show Order Ticket** - will use the Order Ticket tool when placing an order.

After you made your selection, tap the **Done** button from the upper right corner of the screen. This will save your setting and bring you back to the **Order Ticket** dialog.



In the title bar, to the left of the **Order Ticket** title, there is a small Clean All button (represented by a broomstick). If you tap that, it will erase the content of all text and price fields.

When you are finished setting up your order, tap the **Place Order** button at the bottom of the page. A confirmation window will pop up, allowing you to go back to make changes if necessary (by tapping **No**). Otherwise, tap **Yes** to finish placing your order.

If you are already connected to Order Entry, the application offers you the possibility to switch between accounts. In order to use this functionality, tap the **Switch Account** button next to your Order Entry **Account** name. This functionality is not available for Paper Trading, just for live trading.

This will bring up a dialog, which contains all the valid Order Entry accounts you used before. In order to switch your Order Entry account tap an item from the account list or press **Cancel** to go back to the previous screen. If you want to read more about this functionality, go to the [Order Entry Account and Provider](#) section of this document.

Anytime, if you need to go back to the **Quote Detail** page, tap the **Back** button from the upper left corner of the screen.

13. Account Information

Based on the chosen menu design you can access the **Account Information** section either from the **vertical menu** or from the **tab bar menu**.

Here you will find all the necessary information about your Order Entry account, such as account balance, equity and more.

If you are already connected to Order Entry, the application offers you the possibility to switch between accounts. In order to use this functionality, tap the **Switch Account** button next to your Order Entry **Account** name.

This functionality is not available for Paper Trading, just for live trading.

Account Info	
Account: [Account Name]	
Current Margin	
Initial	\$92,755.00
Maintenance	\$84,432.00
Current Margin incl. Orders	
Initial	\$92,755.00
Maintenance	\$84,432.00
Marked-to-Market	
Ending Acct Balance	\$0.00
OT Equity	\$72,155.00
Total Acct Equity	\$72,155.00
Net Liq Value	\$72,155.00
Options Value	
Long	\$0.00
Short	(\$0.00)
Net	\$0.00
Start-of-Day	
Acct Balance	\$0.00
Securities On Deposit	\$0.00
Purchasing Power	(\$20,600.00)
Intraday Commission Applied	\$0.00
Intraday Fees Applied	\$0.00
Intraday Cash In/Out	\$0.00
Gross Futures Profit Loss	\$0.00
Long Option Premium	(\$0.00)

This will bring up a dialog, which contains all the valid Order Entry accounts you used before. In order to switch your Order Entry account tap an item from the account list or press **Cancel** to go back to the previous screen. If you want to read more about this functionality, go to the Order Entry Account and Provider section of this document.

If you try to open up this screen while logged out from Order Entry, you will be asked if you want to log in, and then taken to the Order Entry login screen.

14. Orders and Positions

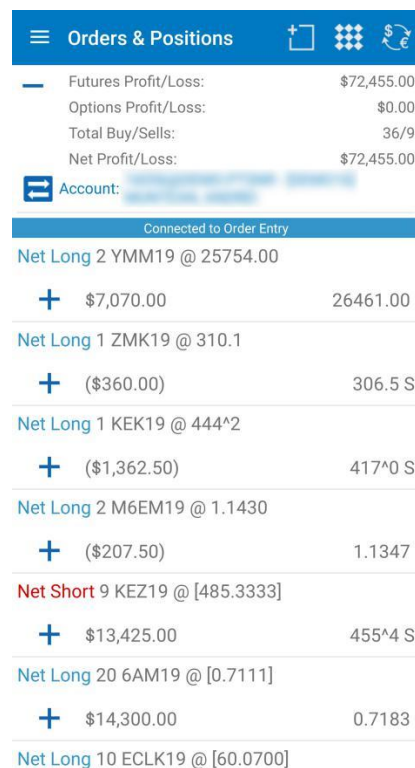
You can access the **Orders and Positions** section either from the **vertical menu** or from the **tab bar menu**, depends which menu design you have chosen.

You will find here a list of all the orders you have placed in the past, as well as positions.

In the title row of the page, there is a button with the **+T-** text, left of the page name. Tapping it will allow you to zoom in and out.

In order to see a summary about your profit and loss, expand the **Show Summary Profit/Loss** section of your **Orders and Positions** module (tap the **+** sign from the left side of it). You will see the following information here: **Futures Profit/Loss**, **Options Profit/Loss**, **Total Buys/Sells**, **Net Profit/Loss** and your Order Entry **Account**.

If you are already connected to Order Entry, the application offers you the possibility to switch between accounts. In order to use this functionality, tap the **Switch Account** button next to your Order Entry **Account** name. This functionality is not available for Paper Trading, just for live trading. This will bring up a dialog, which contains all the valid Order Entry accounts you used before. In order to switch your Order Entry account tap an item from the account list or press **Cancel** to go back to the previous screen. If you want to read more about this functionality, go to the Order Entry Account and Provider section of this document.



Orders & Positions		
Futures Profit/Loss:		\$72,455.00
Options Profit/Loss:		\$0.00
Total Buy/Sells:		36/9
Net Profit/Loss:		\$72,455.00
Account: [blurred]		
Connected to Order Entry		
Net Long 2 YMM19 @ 25754.00		
+	\$7,070.00	26461.00
Net Long 1 ZMK19 @ 310.1		
+	(\$360.00)	306.5 S
Net Long 1 KEK19 @ 444^2		
+	(\$1,362.50)	417^0 S
Net Long 2 M6EM19 @ 1.1430		
+	(\$207.50)	1.1347
Net Short 9 KEZ19 @ [485.3333]		
+	\$13,425.00	455^4 S
Net Long 20 6AM19 @ [0.7111]		
+	\$14,300.00	0.7183
Net Long 10 ECLK19 @ [60.0700]		

14.1. Orders

In case of orders, tap the number of the order to display more information about the selected order. You can also tap the order itself to go to the **Order Detail** screen, giving more details about your order.

For new orders, you can **Cancel**, **Cancel Replace**, or **Cancel Replace MKT** that order by

pressing their respective buttons. In the last 2 cases,

an **Order Ticket** will be brought up to place the new replacing order.

Orders & Positions			
CANCEL		CXL/R	CXL/R MKT
ORD. #	STATUS		LAST
63118	New Order		2912.25
ORD. TIME	SESSION	LIFETIME	GTD
02:28:15 PM	Electronic	Day	
SIDE	QTY	CONTRACT	PRICE
Sell	3	ESM19	2915.00
ORD. TYPE			LMT. PRICE
LMT			----
ACCOUNT	SALES CODE	ENTERED BY	
100000	SC-QST	JPMorgan Chase Bank	

14.2. Positions

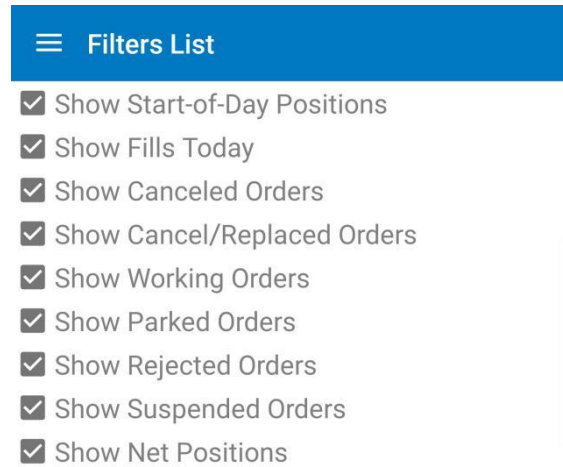
In case of positions, only the net positions are displayed by default. Tap the **Show Details** button in the upper right corner of the page to expand the list of positions. Tap **Show Net** to display only the nets again. You can tap the + or - icons from the left side of a net position, in order to show the details for that position only.

Tap a position to bring up the **Position Detail** screen. Here you can view more information about the selected position. You can also tap the **Offset** and **Reverse** buttons to enter the offset and the reverse of the position.

Orders & Positions			
OFFSET		REVERSE	
LAST			PROFIT/LOSS
26459.00			\$7,050.00
SIDE	QTY	CONTRACT	PRICE
Net Long	2	YMM19	25754.00
ACCOUNT			SALES CODE
100000			SC-QST

14.3. Filters:

On the upper left corner of the page, tap **Filter** button to bring up the filters. In the filter list you can toggle **On/Off** the display of certain kinds of orders or positions to only display the entries you want to see



15. Price Ladder

This module allows you to view detailed real-time data about a single contract. In order to enter **Price Ladder**, go to a **Quote Detail** page and then tap the **Price Ladder** button from the upper right corner of the screen.

When you enter a **Price Ladder**, the currently selected contract's information will be displayed by default. You can change the contract by tapping the contract field. Below the contract field, you can see a magnifying glass icon, which brings up the **Symbol Search** tool. In order to read more about this, please go to the Symbol Search section of this document.

Price Ladder		
POS: -3	AVG: 2881.75	
OPL: (\$4,500.00)	LAST: 2911.75	SELL
TPL: (\$4,500.00)	CHG: +2.25	BUY
ESM19	HI: 2921.25	
	LO: 2909.75	
Account: [blurred]		
	2913.00	350
	2912.75	392
	2912.50	344
	2912.25	323
	2912.00	234
46	2911.75 (1)	
392	2911.50	
502	2911.25	
507	2911.00	
452	2910.75	

In the upper section of the **Price Ladder**, you can view information about the contract such as:

- **Pos** - total number of buys and sells
- **TPL** – total profit and loss
- **OPL** - unrealized profit
- **Avg** – average
- **Last** – last trade
- **Chg** - net change
- **Hi** - high value
- **Lo** - low value

16. Options Chain

This module allows you to view detailed information about the options for a given futures contract. In order to enter **Options Chain**, go to a **Quote Detail** page and then tap the **Options Chain** button from the upper right corner of the screen.

The **Options Chain** tables are organized in tabs corresponding to the contract months. An options table is symmetrical, with **Calls** on the left side and **Puts** on the right side. The **Strike** column is in the middle and the option contracts are organized by the Strike price in ascending order, from top to bottom.

By default, the active tab, which will be opened when you open **Options Chain**, contains information about the front month. You can navigate between contract month tabs by tapping the title of the tab.

The contract month tabs are divided into pages. By default, the active page, which will be opened when you tap a contract month tab contains the center at market. You can scroll to the next page by swipe from right to left, or to the previous page by swipe from left to the right.

Above the contract month tables you can find more information about the future contract such as:

- **Last** – Last trade
- **Net Ch** - Net change
- **Net Ch %** - Net change percent
- **High**
- **Low**
- **Bid**
- **Ask**

Options Chain

LAST

2911.75

NET CH

2.25

BID-SELL

2911.75 (84)

ASK-BUY

2912.00 (252)

NET CH %

HIGH

LOW

2909.75

OPEN

2910.25

0.08 %

2921.25

Account:

XXXXXXXXXXXX

XXXXXXXXXXXX

ESM19

CALLS

PUTS

M19 - JUNE 19

BID

63.25 (38)

LAST

64.25 (18)

STRIKE

2895

LAST

46.50 (1)

BID

63.75 (33)

NET CH

1.25

LAST

47.00 (36)

BID

60.00 (37)

NET CH

60.25 (1)

STRIKE

2900

LAST

48.25 (2)

BID

60.50 (70)

NET CH

0.50

LAST

48.75 (44)

BID

56.75 (172)

NET CH

57.25 (1)

STRIKE

2905

LAST

49.75 (1)

BID

57.25 (38)

NET CH

0.75

LAST

50.50 (32)

BID

53.75 (33)

NET CH

54.50 (1)

STRIKE

2910

LAST

51.25 (2)

BID

54.25 (91)

NET CH

1.00

LAST

52.50 (88)

BID

50.75 (35)

NET CH

51.25 (1)

STRIKE

2915

LAST

53.50 (6)

BID

51.00 (32)

NET CH

0.75

LAST

54.50 (237)

BID

47.75 (39)

NET CH

48.75 (4)

STRIKE

2920

LAST

56.75 (6)

BID

48.25 (101)

NET CH

1.25

LAST

56.50 (84)

BID

45.00 (21)

NET CH

45.75 (10)

STRIKE

2925

LAST

55.25 (1)

BID

45.25 (35)

NET CH

1.00

LAST

58.25 (21)

BID

NET CH

LAST

58.50 (32)

- **Open**

If you are already connected to Order Entry, the application offers the possibility to switch between accounts. In order to use this functionality, tap the **Switch Account** button next to your Order Entry **Account** name. This functionality is not available for Paper Trading, just for live trading. This will bring up a dialog, which contains all the valid Order Entry accounts you used before. In order to switch your Order Entry account, tap an item from the account list or press **Cancel** to go back to the previous screen. If you want to read more about this functionality, go to the Order Entry Account and Provider section of this document.

Below these you can find your current contract and 3 more buttons:

A blue rectangular button with the word "CALLS" in white capital letters.

By tapping this button you can hide/display the Calls columns in the contract month table.

A blue rectangular button with the word "PUTS" in white capital letters.

By tapping this button you can hide/display the Puts columns in the contract month table.



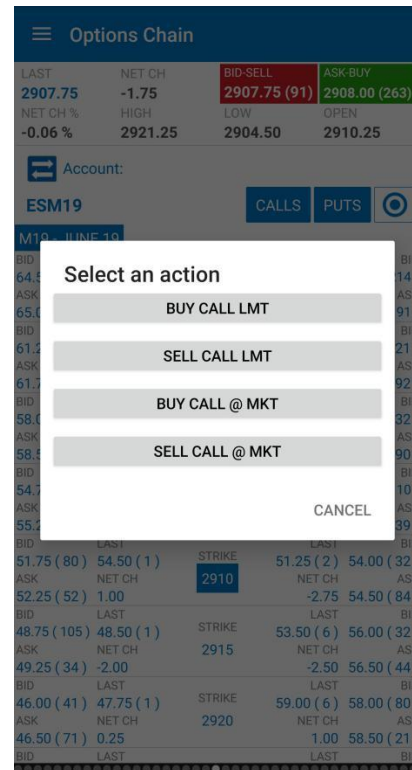
By pressing this button you can go to the center of the market. This Strike is highlighted, because it represents the closest price to the last trade.

If you want to place an order for a selected option you should double tap the row, which contains it and the Select an action menu will be opened.

It is important to mention that depending on your selection, you should double tap the right or the left side of Strike column. If you double tap the right side of the table, you can place Put option orders and if you double tap the left side of it, you will be asked for actions in placing Call options orders.

The actions you can select from will be:

- Buy Put/Call LMT
- Sell Put/Call LMT
- Buy Put/Call @ MKT
- Sell Put/Call @ MKT



If you want to go back to the previous screen without placing any option order, tap the **Cancel** button.

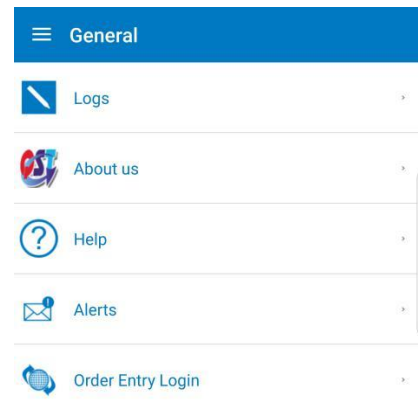
BID-SELL	ASK-BUY
2911.75 (84)	2912.00 (252)

To place an order for the current future contract, you should press the **Ask - Buy** or **Bid - Sell** buttons from the top of the screen. This action will open Order Ticket dialog for you.

17. General

The **General** section contains the following sections:

- **Logs** – check or send your logs
- **About Us** – get information about the application or build version and date
- **Help** – read Help document
- **Alert Settings** – customize the appearance of application alerts
- **Options** or **Order Entry Login/Logout**



The name and the functionality of this entry depend on your status.

SAVE SETTINGS

If you didn't log in to the application this entry is named **Options**. You can enable or disable the save username and password option and select your Order Entry provider here. If you want to read more about this, please go to the Login options section of this document.

After you logged in to the application, you should have **Order Entry Login/Logout**. If you are connected to Order Entry, you will have **Order Entry Logout** and if you are not connected, you should have Order Entry Login. In both of these cases, you can change your Order Entry credentials and settings here. In order to get more information about this, please read the Order Entry Login options section of this document.

- **Save Settings** – save your settings

17.1. Sending Logs

In case a problem occurs, in order to send your user logs, go to **Logs** in the **General** section. Here you can see a list of several log entries. The latest log entry should be on the bottom of the list and colored in red.

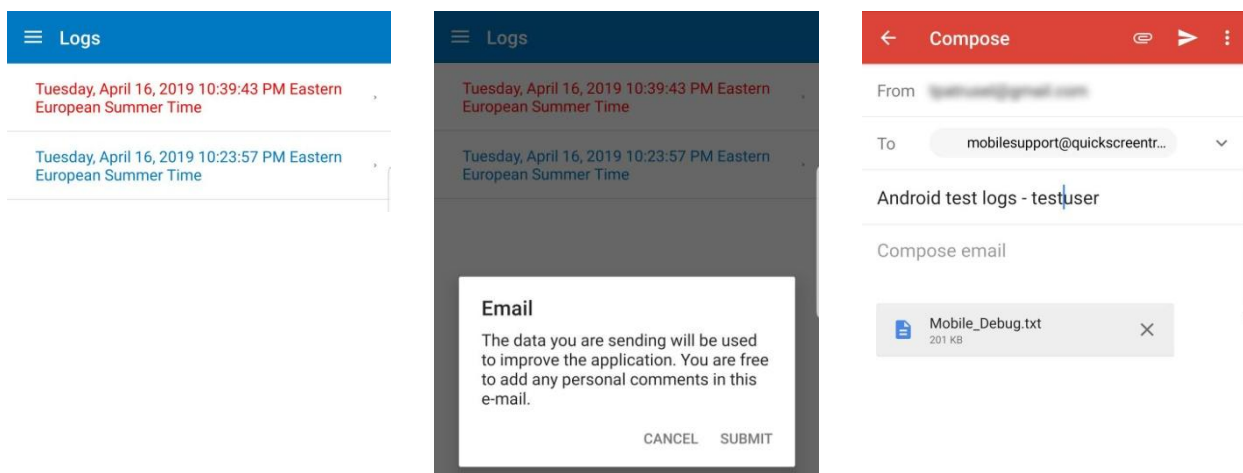
Tap one of your logs to select it. A screen with **Log Details** will appear. In order to send it you must tap the **Send e-mail** button on the upper right corner of the screen.

A message will appear, warning you that you are about to send e-mail. Press **Submit** to e-mail your logs, along with any personal comments you want to add, or press **Cancel** to go back to the previous screen.

On the e-mail page, the address for the technical support team is already entered, with the log attached to the message. Press **Send** in the upper right corner of the screen when you are done with the e-mail.

You can also edit the logs, if you tap the **Edit** button from the upper right corner of the screen. You will be able to delete the old log files. The latest log entry cannot be deleted.

If you open a log file, you can go directly to the end of it, if you tap the **Go To End** button below the **Send e-mail** button.



18. Help

If you need assistance with any of the modules or functions of the application, go to the **General** section of the application and select **Help**, then read the topic you need. You will find detailed guides here complete with images to help you out.

19. Alert Settings

Alert Settings offers the possibility of customizing the popup messages and notifications sent by the application

Alerts screen contains 3 sections:

First section provides settings for Price Alarms, Orders and Fills and Block Trades alerts. Enabling these settings will ensure that the application will show popup messages or send background notifications for these specific application modules.

Alerts

ALERT TYPES:

- ☒ Price Alarms
- ☐ Block Trades
- ☒ Order and Fill Messages

☒ Do you want a pop-up message for Alerts while using the app?

☒ Do you want to see your accumulated notifications after you resume the app?

Sound

Vibrate

Second section controls whether the foreground or background application messages are displayed:

Do you want a pop-up message for Alerts while using the app?

By enabling this setting, the application will display pop-up messages about the modules selected in the first section while the application is active and visible.

Do you want to see your accumulated notifications after you resume the app?

By enabling this setting, the application will send notifications about the modules selected in the first section while the application runs in the background. These notifications can be found in the notifications area of the iOS. Tapping on the notification will bring the application in foreground offering more details regarding the notification.

Third section contains Sound and Vibrate settings. This allows the Alerts to be accompanied by sound or vibration. The background notifications can be customized with sound or vibration using the iOS settings.

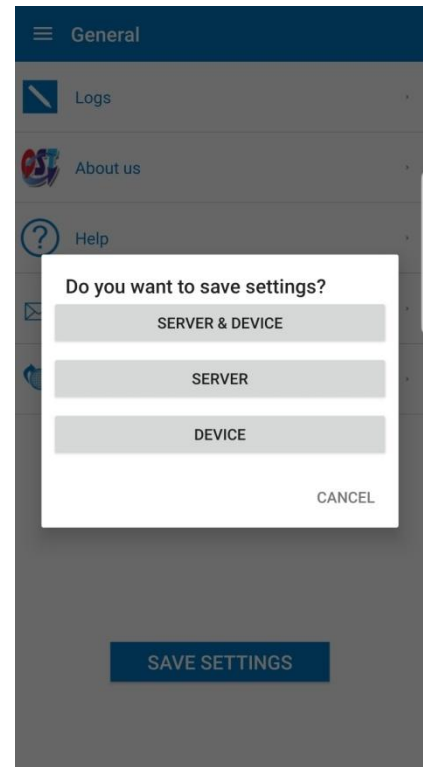
20. Saving Settings

To save your current quotes, charts and other configurations, press the **Save Settings** button in the **General** tab.

Depending on your selection, you can save your settings on our server, on your device or both of them:

- **Server**
- **Device**
- **Server & Device**

In order to get back to the **General** tab without saving any settings, tap the **Cancel** button.



21. Logging Out

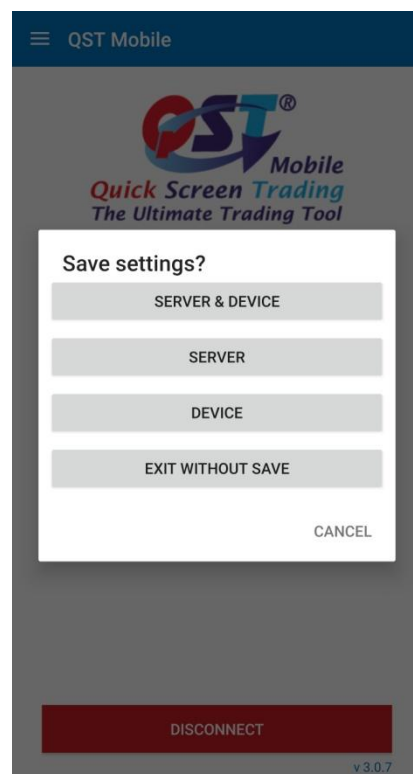
To exit the application, go to the **Logout** section. Based on the chosen menu design you can access the Logout section either from the **vertical menu** or from the **tab bar menu**. A screen will appear similar to the Login screen.

You will see a toggle button for **Save Settings**. Select **On** if you want to save your settings and **Off**, if you don't need to save any modifications. To log out, press the **Disconnect** button.

If you enabled the **Save Settings** feature, a dialog will pop up, asking where you want to save your settings. You can choose from the following options:

- to save your settings on our **Server**
- on your **Device**
- both **Server & Device**
- **Exit without Saving**
- You can also choose to **Cancel** the saving procedure and go back to the Logout screen.

If you save your settings on the server, you will be able to keep them for use on other android phone or tablet devices or other platforms with the application installed (desktop and online version). After making your selection, you will be logged out immediately.



Thank you for your attention.



If you have further questions, please contact us
at mobilesupport@quickscreentrading.com